



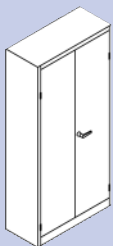
ESD universal cabinets with swinging doors and grounding cord

- Rugged construction made of conductive painted sheet panel
- High load capacity per shelf 70 kg
- Doors attached at hinges at the outside, comfortable aperture angle approx. 180°
- Alternating locking cylinder with 2 keys
- Design locking handle, faintly nickle-plated provides striking optic and optimal handling
- 3-bar closure, dressing of closing bars with reinforced doors
- Highly flexible interior decoration because of adjustability within a 15 mm raster

Typical resistance to ground: $10^6 - 10^8$ Ohm



Conductive cabinet with swinging doors



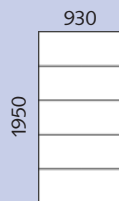
Conductive cabinet
1 galvanised shelf
inside.
2 folder heights,
25 mm thick cover
panel



Conductive cabinet
2 galvanised shelves
inside.
2 1/2 folder heights,
25 mm thick cover
panel



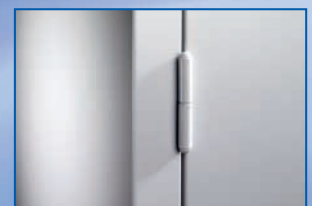
Conductive cabinet
4 galvanised
shelves inside.
5 folder heights



Outer dims. width	930	930	930
Outer dims. depth	400	400	400
Order No:	34.110.05	34.110.10	34.110.15



Handle with locking faintly nickle-plated



Outer door hinges (180° aperture angle)



ESD ring binder DIN A4

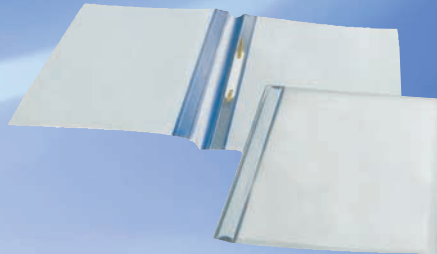
DIN A4 ring binder made of conductive carton supplied with edge protection and back with label. Black colour with ESD symbol. Typical resistance to ground: 10^6 - 10^8 Ohm



Order No:	Design
24.745.00	width of binder 65 mm/2 rings
24.745.10	width of binder 65 mm/4 rings
24.745.20	width of binder 45 mm/4 rings

ESD clear binder DIN A4

DIN A4 clear binder made of permanent, static dissipative PVC, transparent and recyclable. With ESD symbol and metal stabling. Typical resistance to ground: 10^9 - 10^{10} Ohm



Order No:	Design
24.500.01	

ESD clipboard DIN A4

DIN A4 made of permanent, static dissipative PVC. Light blue with metal clip and ESD symbol. Typical resistance to ground: $\leq 10^{11}$ Ohm



Order No:	Design
24.700.20	without lid
24.700.21	with lid

ESD ball-pen

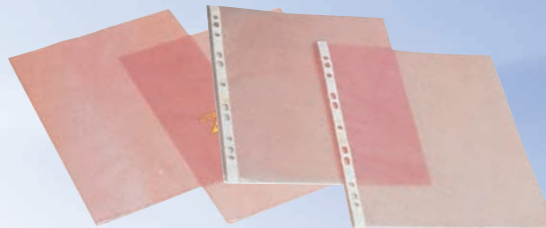
Ball-pen made of permanent, static dissipative plastic, colour yellow/black with ESD symbol.



Order No:	Design
24.900.90	

ESD document holders, pink

Document holders made of dissipative PE foil, pink transparent with ESD symbol



Order No:	Design
24.004.01*	DIN A4 / open top
24.004.03**	DIN A4 / 2 open sides
24.005.02**	DIN A5 / 2 open sides
24.003.01*	DIN A3 / open top

* with holed edge ** without holed edge

ESD document holder CLEARSTAT

DIN A4 Document holder made of permanent, static dissipative PE foil. Clear transparent with perforations and ESD symbol. Open top.



Order No:	Design
24.010.04	

TARIFOLD document holding system

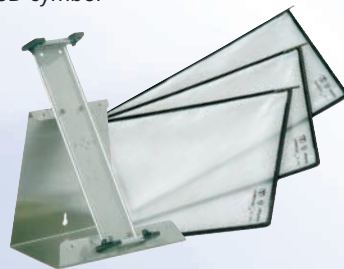
Stainless steel document holding system with document holders made of permanent dissipative PE foil, transparent with ESD symbol.



Order No:	Design
24.880.00	wall mounting frame with 10 document holders
24.880.10	separate wall mounting frame

TARIFOLD benchtop frame

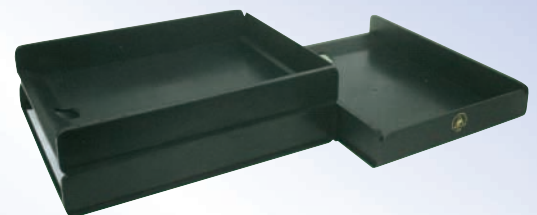
Benchtop frame made of stainless steel with document holders made of permanent dissipative PE foil, transparent with ESD symbol



Order No:	Design
24.880.20	benchtop frame with 10 document holders
24.880.30	separate benchtop frame
24.880.40	10 document holders, open top, separate
24.880.50	10 document frames, open top with loop, separate

ESD tray

DIN A4 tray made of volume conductive synthetic. Black with ESD symbol, stackable.



Order No:	Design
24.700.10	