

ESD work station

ESD work station Type KC 700/1

- EN 61340-5-1/5-2 • Order No: 39.006.00 (all inclusive)

The complete work station set can also be ordered without floor mat or ESD chair respectively all articles can be ordered separately when referring to the appropriate order number. If you wish further consultation please feel free to call.

Note:

Should you wish another snap fastener connection or safety plugs respectively other colours or dimensions for table and floor mats –Please note this on your order.

The ESD work station Type KC 700/1 includes the following products:



ESD table mat

Type CTM 500 caoutchouc, grey;
Dimensions: 600 x 1000 x 2,0 mm
With 2 snap fasteners 10 mm
Order No: 31.200.20



Earth connecting box

With 2 snap fasteners 10 mm
and 1 banana plug socket
Order No: 38.301.04



Grounding cords

DK 10 mm - DK 10 mm
Length 1.500 mm
Order No: 38.010.15



Coil cord

With 1 MOhm resistor to
connect the wrist strap.
DK 10 mm – DK 10 mm
Length 2.400 mm
Order No: 38.005.40



Wrist strap

Adjustable,
Snap fastener 10 mm
Order No: 38.000.60

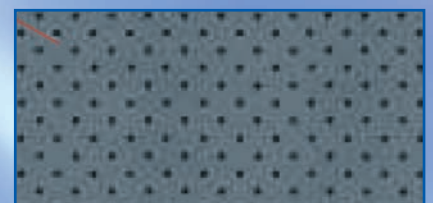
ESD chair Type CA 280

Colour: blue
With conductive alternating cushions
Order No: 36.960.10



ESD floor mat

Type CB 412 caoutchouc, dust grey;
dimensions: 1.200 x 2.000 x 2.5 mm;
With 2 snap fasteners 10 mm
Order No: 30.100.96



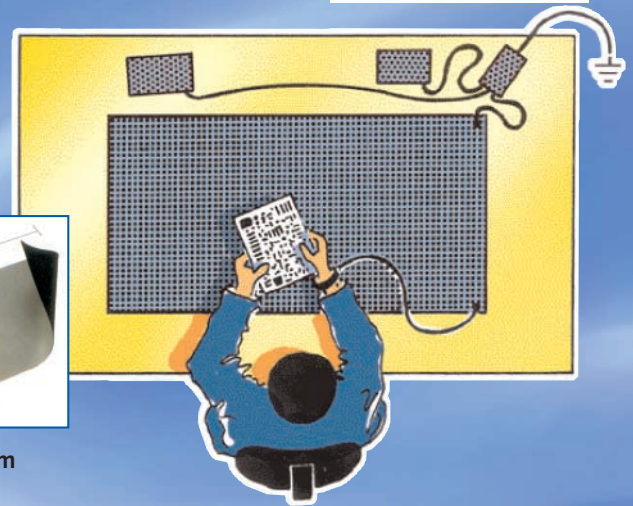
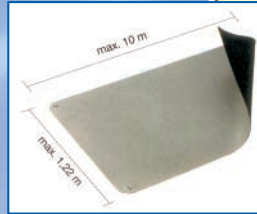
Electrically conductive table mats



Table coverings

- 2 layer rugged synthetic rubber
- resistant to solder and heat
- Abrasion resistant
- Halogen free
- Volume conductive
- Conductive conglutination is not required
- Thickness: 2 mm

Resistance to ground: R_A according to EN 61340-5-1:10⁶ - 10⁷ Ohm

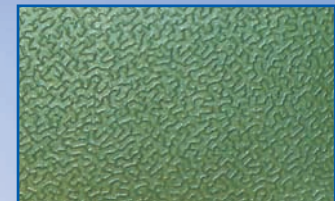
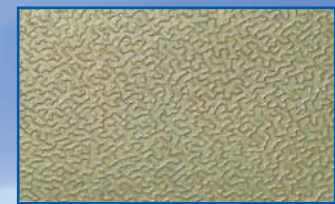


Order No:	Colour	Dimensions
31.200.00	grey	rolls: 1.220 mm x 10 m
31.201.86	grey	rolls: 1.000 mm x 10 m
31.200.20	grey	600 x 1.000 mm with rounded edges, converted with 2 snap fastener 10 mm and 1 grounding cord, smooth (1MΩ), custom sizes quoted on request

Order No:	Colour	Dimensions
31.200.05	beige	rolls: 1.220 mm x 10 m
31.202.11	beige	rolls: 1.000 mm x 10 m
31.200.25	beige	600 x 1.000 mm with rounded edges, converted with 2 snap fastener 10 mm and 1 grounding cord, smooth (1MΩ), custom sizes quoted on request

Order No:	Colour	Dimensions
31.200.10	green	rolls: 1.220 mm x 10 m
31.200.30	green	600 x 1.000 mm with rounded edges, converted with 2 snap fastener 10 mm and 1 grounding cord, smooth (1MΩ), custom sizes quoted on request

Order No:	Colour	Dimensions
31.200.15	light blue	rolls: 1.220 mm x 10 m
31.200.35	light blue	600 x 1.000 mm with rounded edges, converted with 2 snap fastener 10 mm and 1 grounding cord, smooth (1MΩ), custom sizes quoted on request



ESD table top

Suitable for working tables

Typical resistance

to ground: 10⁶ - 10⁷ Ohm according to EN 61340-5-1

Material: electrically conductive smooth countertop with a conductive 0.2 mm upper layer on both sides. Circular conductive black paste at the edges

Thickness: 19, 25 or 30 mm
Custom sizes quoted on request

